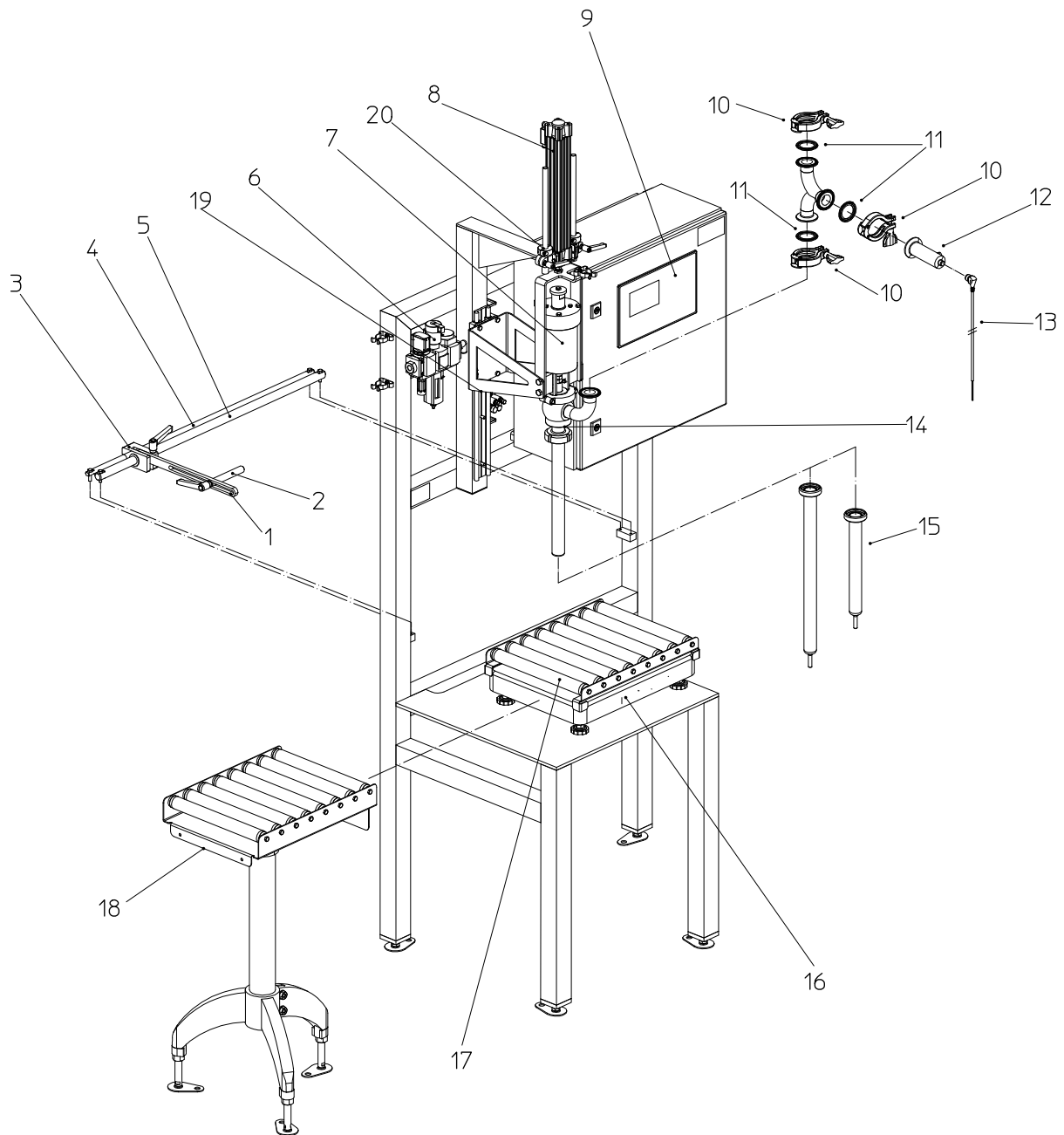




Abfüllsystem
Filling system

FLUX-FILL WT



Format: A4

Vers.: 2

10/2020

FLUX-GERÄTE GMBH D-75433 Maulbronn

10-00186310



Ersatzteilliste
Spare parts list
FLUX-FILL WT

Viskosität / viscosity

Zulassung /approval

Ventillänge /valve length

Waagen
Kapazität (max.)
M=Mehrfachwaage /
scale capacity (max)
M=multi range scale

Ausführung / version

Pos. No.	Stück Qty.	Bestell-Nr. Part No.	Bestellbezeichnung	Description	verwendbar in Variante useable in version			
1	1	10-00130033	Anschlag links	Stop left	alle / all			
2	1	10-00130032	Anschlag hinten	Rear stop	alle / all			
3	1	10-00130034	Halterung für Anschlag	Holder for stop	alle / all			
4	1	10-00130038	Verdrehsicherung für Anschlag	Anti-rotation device for stop	alle / all			
5	1	10-00130031	Achse für Anschlag	Axis for stop	alle / all			
6	1	10-00130051	Wartungseinheit	Maintenance unit	[LV, HV]	250	[30, 60]	
					[LV, HV]	250	[15, 30, 60, 60M]	FOOD
					[LV, HV]	400	[30, 60]	
					[LV, HV]	400	[15, 30, 60, 60M]	FOOD
6	1	10-00130052	Wartungseinheit Ex	Maintenance unit Ex	[LV]	Ex 250	[15, 30, 60, 60M]	FOOD
					[LV]	Ex 400	[15, 30, 60, 60M]	FOOD
7	1	10-00130041	Dosierventil 250	Dosing valve 250	[LV, HV]	250	[30, 60]	
					[LV, HV]	250	[15, 30, 60, 60M]	FOOD
7	1	10-00130042	Dosierventil 250 Ex	Dosing valve 250 Ex	[LV]	Ex 250	[15, 30, 60, 60M]	FOOD
7	1	10-00130043	Dosierventil 400	Dosing valve 400	[LV, HV]	400	[30, 60]	
					[LV, HV]	400	[15, 30, 60, 60M]	FOOD
7	1	10-00130044	Dosierventil 400 Ex	Dosing valve 400 Ex	[LV]	Ex 400	[15, 30, 60, 60M]	FOOD
8	1	10-00130047	Linearachse 250	Linear axis 250	[LV, HV]	250	[30, 60]	
					[LV, HV]	250	[15, 30, 60, 60M]	FOOD
8	1	10-00130048	Linearachse 400	Linear axis 400	[LV, HV]	400	[30, 60]	
					[LV, HV]	400	[15, 30, 60, 60M]	FOOD
8	1	10-00130049	Linearachse 250 Ex	Linear axis 250 Ex	[LV]	Ex 250	[15, 30, 60, 60M]	FOOD
8	1	10-00130050	Linearachse 400 Ex	Linear axis 400 Ex	[LV]	Ex 400	[15, 30, 60, 60M]	FOOD
9	1	10-00130065	Bedienterminal IND570	Operating terminal IND570	[LV]	Ex 250	[15, 30, 60]	FOOD
					[LV]	Ex 400	[15, 30, 60]	FOOD
					[LV, HV]	250	[30, 60]	
					[LV, HV]	250	[15, 30, 60]	FOOD
					[LV, HV]	400	[30, 60]	
					[LV, HV]	400	[15, 30, 60]	FOOD
9	1	10-00130074	Bedienterminal digital IND570	Operating terminal digital IND570	[LV]	Ex 250	[60M]	FOOD
					[LV]	Ex 400	[60M]	FOOD
					[LV, HV]	250	[60M]	FOOD
					[LV, HV]	400	[60M]	FOOD
					alle / all			
10	1	10-43021019	Gelenkklemme Clamp 1-1/2	Hinged clamp 1-1/2	alle / all			
11	1	10-92569014	Dichtung Clamp 1-1/2" -FKM/FDA	Seal FKM bl, clamp 1 1/2	alle / all			
12	1	10-00130087	Druckaufnehmer FLUX-FILL WT	Pressure sensor FLUX-FILL WT	[HV]	250	[30, 60]	
					[HV]	250	[15, 30, 60, 60M]	FOOD
					[HV]	400	[30, 60]	
					[HV]	400	[15, 30, 60, 60M]	FOOD
13	1	10-00130088	Kabel FLUX-FILL WT	Cable FLUX-Fill WT	[HV]	250	[30, 60]	
					[HV]	250	[15, 30, 60, 60M]	FOOD
					[HV]	400	[30, 60]	
					[HV]	400	[15, 30, 60, 60M]	FOOD
14	1	10-92589064	Dichtungssatz FKM Dosierventil	Sealing kit FKM dosing valve	alle / all			
15	1	10-00130106	Flaschenabfüllung Außenrohr für 250mm Ventil	bottle filling Outer tube for 250mm valve	[LV]	250	[30, 60]	
					[LV]	250	[15, 30, 60, 60M]	FOOD
15	1	10-00130107	Flaschenabfüllung Außenrohr für 400mm Ventil	bottle filling Outer tube for 400mm valve	[LV]	400	[30, 60]	
					[LV]	400	[15, 30, 60, 60M]	FOOD
16	1	10-00130077	Waage 30 FLUX-FILL WT	Scale 30 FLUX-FILL WT	[LV, HV]	250	[30]	
					[LV, HV]	400	[30]	
16	1	10-00130078	Waage 60 FLUX-FILL WT	Scale 60 FLUX-FILL WT	[LV, HV]	250	[60]	
					[LV, HV]	400	[60]	
16	1	10-00130079	Waage PFC 15 FLUX-FILL WT	Scale PFC 15 FLUX-FILL WT	[LV, HV]	250	[15]	FOOD
					[LV, HV]	400	[15]	FOOD
16	1	10-00130080	Waage PFC 30 FLUX-FILL WT	Scale PFC 30 FLUX-FILL WT	[LV, HV]	250	[30]	FOOD
					[LV, HV]	400	[30]	FOOD
16	1	10-00130081	Waage PFC 60 FLUX-FILL WT	Scale PFC 60 FLUX-FILL WT	[LV, HV]	250	[60]	FOOD
					[LV, HV]	400	[60]	FOOD
16	1	10-00130082	Waage PFC 15 FLUX-FILL WT Ex	Scale PFC 15 FLUX-FILL WT Ex	[LV]	Ex 250	[15]	FOOD
					[LV]	Ex 400	[15]	FOOD



Ersatzteilliste
Spare parts list
FLUX-FILL WT

Viskosität / viscosity

Zulassung /approval

Ventillänge /valve length

Waagen
Kapazität (max.)
M=Mehrreichwaage /
scale capacity (max)
M=multi range scale

Ausführung / version

Pos. No.	Stück Qty.	Bestell-Nr. Part No.	Bestellbezeichnung	Description	verwendbar in Variante useable in version				
16	1	10-00130083	Waage PFC 30 FLUX-FILL WT Ex	Scale PFC 30 FLUX-FILL WT Ex	[LV]	Ex	250	[30]	FOOD
					[LV]	Ex	400	[30]	FOOD
16	1	10-00130084	Waage PFC 60 FLUX-FILL WT Ex	Scale PFC 60 FLUX-FILL WT Ex	[LV]	Ex	250	[60]	FOOD
					[LV]	Ex	400	[60]	FOOD
16	1	10-00130090	Waage PFC 60M FLUX-FILL WT	Scale PFC 60M FLUX-FILL WT	[LV, HV]	Ex	250	[60M]	FOOD
					[LV, HV]	Ex	400	[60M]	FOOD
16	1	10-00130091	Waage PFC 60M FLUX-FILL WT Ex	Scale PFC 60M FLUX-FILL WT Ex	[LV]	Ex	250	[60M]	FOOD
					[LV]	Ex	400	[60M]	FOOD
17	1	10-00130092	Rollenbahnaufsatz FLUX-FILL WT für Waage bis 15 kg, S	Conveyor belt cover FLUX-FILL WT for scale up to 15 kg, S	[LV, HV]		250	[15]	FOOD
					[LV, HV]		400	[15]	FOOD
					[LV]	Ex	250	[15]	FOOD
					[LV]	Ex	400	[15]	FOOD
17	1	10-00130093	Rollenbahnaufsatz FLUX-FILL WT für Waage ab 15 kg, S	Conveyor belt cover FLUX-FILL WT for scale from 15 kg, S	[LV, HV]		250	[30, 60]	
					[LV, HV]		400	[30, 60]	
					[LV, HV]		250	[30, 60]	FOOD
					[LV, HV]		400	[30, 60]	FOOD
					[LV]	Ex	250	[30, 60]	FOOD
					[LV]	Ex	400	[30, 60]	FOOD
18	1	10-00130094	Rollenbahnmodul FLUX-FILL WT Einzelelement mit Standfuß, S	Conveyor belt module FLUX-FILL WT single element with pedestal, S	[LV, HV]		250	[30, 60]	
					[LV, HV]		250	[15, 30, 60]	FOOD
					[LV, HV]		400	[30, 60]	
					[LV, HV]		400	[15, 30, 60]	FOOD
19	1	10-00130120	Ventil-Führung kpl. 250	valve guidance cpl. 250	[LV, HV]		250	[15, 30, 60, 60M]	FOOD
					[LV, HV]		250	[30, 60]	
19	1	10-00130121	Ventil-Führung kpl. 400	valve guidance cpl. 400	[LV, HV]		400	[15, 30, 60, 60M]	FOOD
					[LV, HV]		400	[30, 60]	
19	1	10-00130122	Ventil-Führung kpl. 250 Edelstahl	valve guidance cpl. 250 stainless steel	[LV]	Ex	250	[15, 30, 60, 60M]	FOOD
19	1	10-00130123	Ventil-Führung kpl. 400 Edelstahl	valve guidance cpl. 400 stainless steel	[LV]	Ex	400	[15, 30, 60, 60M]	FOOD
20	1	10-00130131	Endlagenbegrenzung des Abfüllventils, einstellbar	limit of valve travel, steplessly variable	alle / all				